

This addendum provides instructions to properly attach the Uprights and Outer Junction Covers to the Bowflex™ Treadmill 10 / Treadmill 22 / Treadmill 25 / Treadmill 56.

If you need assistance, please contact Customer Service (if purchased in US/Canada) or your local distributor (if purchased outside US/Canada). To find your local distributor, go to: [www.nautilusinternational.com](http://www.nautilusinternational.com)

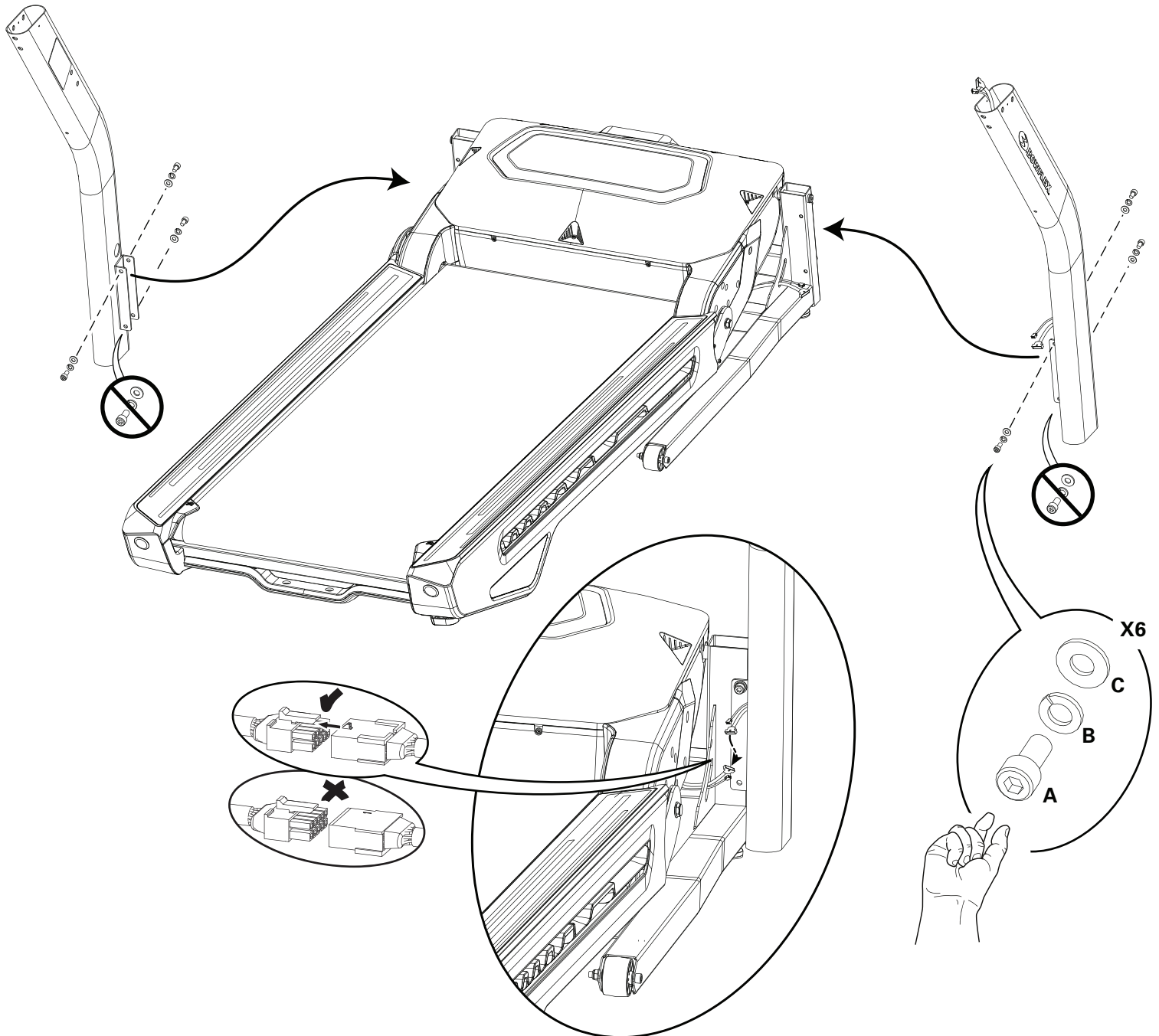
This icon means a potentially hazardous situation which, if not avoided, could result in death or serious injury. Read and understand all Warnings on this machine.

Nautilus, Inc., [www.NautilusInc.com](http://www.NautilusInc.com), 5415 Centerpoint Parkway, Groveport, OH 43125 U.S.A. - Customer Service: North America (800) 605-3369, [csnls@nautilus.com](mailto:csnls@nautilus.com) | outside U.S. [www.nautilusinternational.com](http://www.nautilusinternational.com) | Printed in China | © 2020 Nautilus, Inc. | Bowflex and the B logo are trademarks owned or licensed by Nautilus, Inc., registered or otherwise protected by common law in the United States and other nations. | **ORIGINAL DOCUMENT - ENGLISH VERSION ONLY**

Refer to the Assembly Manual for complete safety instructions.

## Assembly Step 1. Attach the Uprights to the Base Assembly, and then Connect the Cables from the Base Assembly to the Right Upright

**Note:** Do not crimp cables. Do not fully tighten Hardware until instructed.



## Assembly Step 7. Attach the Base Shrouds and Outer Junction Covers to the Frame Assembly

**Note:** Be sure that the Right Base Shroud hides the Cable Connectors. If necessary, push the Cable further into the Right Upright.

